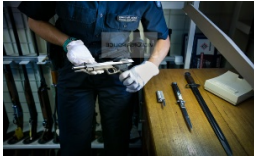


Licensing & Regulation Division Quick Guide



Quick Guide: Control of Weapons List of prohibited weapons

INDEX

1.0	Prohibited Weapons	2
1.1	Swords	2
1.2	Crossbows.....	2
1.3	Imitation Firearms	3
1.3.1	Gel Blaster	3
1.4	Imitation Firearm (Laser Tag and Infrared Devices)	3
1.5	Daggers	4
1.6	Martial Arts Weapons	4
1.6.1	Baton-Chucks or Bo-Chucks	4
1.6.2	Butterfly Knives.....	4
1.6.3	Butterfly Swords.....	5
1.6.4	Chinese whip, whip spear, 7 piece iron chain, 9 piece iron chain, Bian Tzu Chiang or Lien Tzu Chiang.....	5
1.6.5	Kama	5
1.6.6	Kasari-Fundo or Manrikigusari	5
1.6.7	Kubotan.....	6
1.6.8	Ninja Climbing Claws, Ninja Hand Claws and Ninja Foot Claws.....	6
1.6.9	Nunchaku	6
1.6.10	Sai or Jitte	6
1.6.11	Shoge, Ninja Kyokeysu-Shoge or Kyotetsu Shoge	6
1.6.12	Suan Ywe Gou	7
1.6.13	Sword.....	7
1.6.14	Throwing stars Surikan, Surikan or Shaken.....	7
1.6.15	Tonfa.....	7
1.7	Prohibited Knives and Blades	8
1.7.1	Ballistic Knife	8
1.7.2	Double-end Knives	8
1.7.3	Flick Knives	8
1.7.4	Bowen Knife Belt, Swordstick, Riding Crop or Similar Weapon.....	8
1.7.5	Knuckle Knife.....	9
1.7.6	Non-metal/Ceramic Knife	9
1.7.7	Push knife or Similar Device	9
1.7.8	Sheath knife (commonly known as the Black Eagle Knife).....	10
1.7.9	Throwing Blade	10
1.7.10	Trench Knife.....	10
1.8	Body Armour, Extendable Batons and Disabling Devices	10
1.8.1	Acoustic Anti-personnel Device	11
1.8.2	Taser or Stun Gun.....	11
1.8.3	Noxious Discharge Articles, including Capsicum Spray	11
1.8.4	Body Armour.....	11
1.8.5	Extendable Baton.....	112
1.9	All Other Prohibited Weapons	112
1.9.1	Blow Gun, and Blow Gun Darts	113
1.9.2	A Cat O'nine Tails with Knotted Lashes.....	13
1.9.3	Hunting Sling, Catapult, Shanghai, or Slingshot	13
1.9.4	A Dart Projector	13
1.9.5	Flail.....	14
1.9.6	Knuckle-duster	14
1.9.7	Laser Pointers.....	14
1.9.8	Mace	14
1.9.9	Shark Dart	15
1.9.10	Studded Glove.....	15
1.9.11	Weighted Glove	15
1.9.12	A Whip with Metal Lashes	16

1.0 PROHIBITED WEAPONS

1.1 Swords

A sword is defined under sch.2 of the Regulations as being a thrusting, striking, or cutting weapon with a long blade having 1 or 2 edges and a hilt or handle. A sword is still classified as a sword even if the 1 or both blades are blunt.



In order to possess a sword a person would need to obtain either a:

- a Chief Commissioner's Approval (CCP), or
- be covered by a Governor in Council exemption (GIC).

To be eligible for a GIC, a person must be able to demonstrate at the time of purchase, that they are a member of a club, group, organisations, or a class of person which has been granted a Governor in Council Exemption Order.

Click [here](#) for a list of clubs, groups, organisations and class of persons which are covered under a GIC for Swords.

1.2 Crossbows

A crossbow is defined under sch. 3 of the Regulations as being a type of bow fixed transversely on a stock grooved to direct a dart, bolt or arrow and being, in particular:



- a) a Pistol Crossbow, being a crossbow that is reasonably capable of being carried or concealed about the person and of being raised and discharged by one hand; and
- b) a General Category Crossbow, being a crossbow that is not a pistol crossbow.

In order to possess a crossbow a person would need to obtain either a:

- a Chief Commissioner's Approval (CCP), or
- be covered by a Governor in Council exemption (GIC).

To be eligible for a GIC a person must be able to demonstrate at the time of purchase, that they are a member of a club, group, organisations, or a class of person which has been granted a Governor in Council Exemption Order.

Click [here](#) for a list of clubs, groups, organisations and class of persons which are covered under a GIC for Crossbows.

1.3 Imitation Firearms

Imitation firearm means a device:

- a) the appearance of which could reasonably be mistaken for that of an operable firearm; but
- b) which is not designed or adapted to discharge shot or a bullet or other missile by the expansion of gases produced in the device by the ignition of strongly combustible materials or by compressed air or other gases, whether stored in the device in pressurised containers or produced in the device by mechanical means and is not capable of being made to do so;

In order to possess an imitation firearm, a person would need to obtain either a:

- a Chief Commissioner's Approval (CCP), or
- be covered by a Governor in Council exemption (GIC).

To be eligible for a GIC a person must be able to demonstrate at the time of purchase, that they are a member of a club, group, organisations, or a class of person which has been granted a Governor in Council Exemption Order.

For more information and images of imitation firearms please access the [Quick Guide to Imitation, Toy & Other firearm paraphernalia](#).

Click [here](#) for a list of clubs, groups, organisations and class of persons which are covered under a GIC for Imitation Firearms.

1.3.1 Gel Blaster

Gel blaster or a similar device that has the appearance of an operable firearm and is designed to discharge a water gel ball or similar projectile:

- the Licensing and Regulation Division do not issue approvals for Gel Blasters and similar devices as they are not approved for public use.

1.4 Imitation Firearm (Laser Tag and Infrared Devices)

Laser tag and target shooting devices which have the appearance of a working firearm but do not function as such.

In order to possess an imitation firearm (laser tag and Infrared devices), a person would need to obtain either a:

- a Chief Commissioner's Approval (CCP), or
- be covered by a Governor in Council exemption (GIC).

To be eligible for a GIC a person must be able to demonstrate at the time of purchase, that they are a member of a club, group, organisations, or a class of person which has been granted a Governor in Council Exemption Order.

Click [here](#) for a list of clubs, groups, organisations and class of persons which are covered under a GIC for Imitation Firearms (Laser Tag and Infrared Devices).

1.5 Daggers

Dagger, being a sharp pointed stabbing instrument (other than an oyster knife), ordinarily capable of being concealed on the person and having:

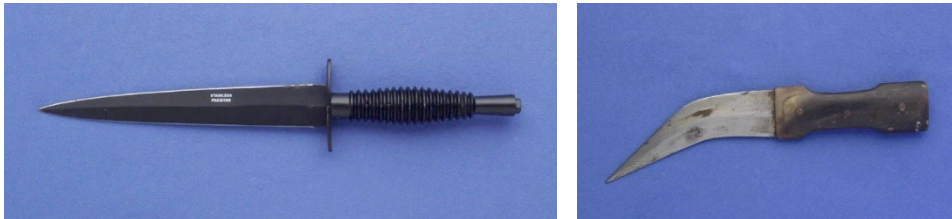
- a) a flat blade with cutting edges (whether serrated or not serrated) along the length of both sides; or
- b) a needle-like blade, the cross section of which is elliptical or has 3 or more sides, but not including instruments such as swords or bayonets.

In order to possess a dagger, a person would need to obtain either a:

- a Chief Commissioner's Approval (CCP), or
- be covered by a Governor in Council exemption (GIC).

To be eligible for a GIC a person must be able to demonstrate at the time of purchase, that they are a member of a club, group, organisations, or a class of person which has been granted a Governor in Council Exemption Order.

Click [here](#) for a list of clubs, groups, organisations and class of persons which are covered under a GIC for Daggers.



1.6 Martial Arts Weapons

Certain prohibited weapons are used for the purposes of martial arts competition and practice. To possess this group of prohibited weapons a person must possess a Chief Commissioners Approval. Definitions and images of the prohibited weapons used for martial arts are as follows:

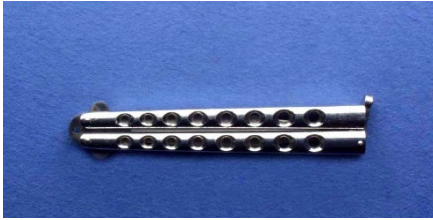
1.6.1 Baton-Chucks or Bo-Chucks

An article that consists of a baton or stick constructed in such a way that it can be unscrewed or broken so as to form two or more parts joined by chain, rope or cord, including the martial arts weapons known as "Baton-chucks" or "Bo-chucks".



1.6.2 Butterfly Knives

Butterfly knife, being a knife with a 2 piece handle that folds together to cover both edges of the blade whether the blade is serrated or not serrated.



1.6.3 Butterfly Swords

The martial arts weapon known as a "Butterfly Sword".



1.6.4 Chinese whip, whip spear, 7 piece iron chain, 9 piece iron chain, Bian Tzu Chiang or Lien Tzu Chiang

An article consisting of a handle and an edged blade, joined by chain or a combination of chain and metal pieces or steel rods, designed to be used as a whip, including the martial arts weapon commonly known as "Chinese whip", "whip spear", "7 piece iron chain", "9 piece iron chain", "Bian Tzu Chiang" or "Lien Tzu Chiang".



1.6.5 Kama

A scythe or sickle-shaped article designed as a weapon that has a fixed or folding blade, and which may or may not have a chain attached, including the martial arts weapon known as "Kama".



1.6.6 Kasari-Fundo or Manrikigusari

An article consisting of a chain, rope, or cord with a wooden or metal baton, stick or rod attached at each end, including the martial arts weapons known as "Kasari-Fundo", "Kusari-Fundo" and "Manrikigusari".

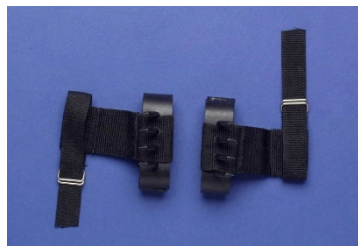


1.6.7 Kubotan

A stick or rod of any material designed as a weapon to be applied to the pressure points of the human body, including the martial arts weapon known as "Kubotan".

**1.6.8 Ninja Climbing Claws, Ninja Hand Claws and Ninja Foot Claws**

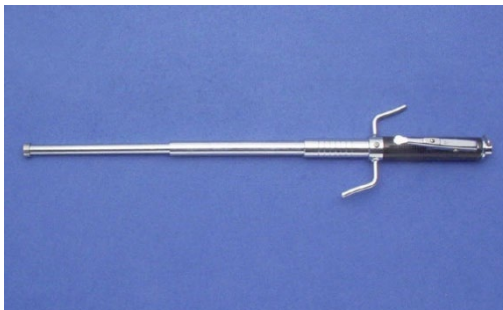
An article designed to be attached to, or worn on, the hands or feet, that has claws attached, including the martial arts weapons known as "ninja climbing claws", "ninja hand claws" and "ninja foot claws".

**1.6.9 Nunchaku**

An article that consists of two sticks, rods or batons joined by a cord, rope or chain including the martial arts weapon known as "Nunchaku".

**1.6.10 Sai or Jitte**

Sai or Jitte, being a short, tapered, metal rod, dull at the point, with flared metal prongs guarding the handle.

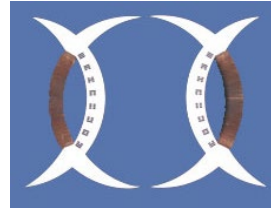
**1.6.11 Shoge, Ninja Kyokeysu-Shoge or Kyotetsu Shoge**

An article consisting of a blade or blades with cord, rope or chain attached for the purpose of enabling the blade to be thrown and retrieved, including the martial arts weapon known as "Shoge", "ninja Kyokeysu-Shoge" or "Kyotetsu Shoge".



1.6.12 Suan Ywe Gou

An article consisting of a curved blade pointed at both ends with a handle attached to the middle, including the martial arts weapon known as "Suan Ywe Gou".



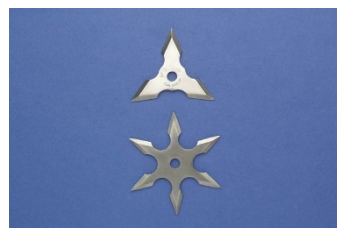
1.6.13 Sword

Sword being a thrusting, striking, or cutting weapon with a long blade having 1 or 2 edges and a hilt or handle. A sword is still classified as a sword even if 1 or both blades are blunt. Martial arts swords come in a variety of forms and include samurai swords.



1.6.14 Throwing stars Surikan, Surikan or Shaken

Throwing star, being a sharpened star-shaped article designed for throwing, including the martial arts weapon known as "Surikan", "Suriken" or "Shaken" (including where the throwing star is attached to a belt-buckle).



1.6.15 Tonfa

The martial arts weapon known as a "Tonfa".



1.7 Prohibited Knives and Blades

Knives and blades which can be classified as prohibited weapons can only be lawfully possessed if a person has either a:

- a Chief Commissioner’s Approval (CCP), or
- be covered by a Governor in Council exemption (GIC).

The following definitions and images of the **knives and blades** are prohibited:

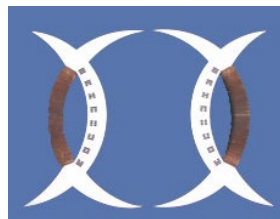
1.7.1 Ballistic Knife

Ballistic knife, being a device or instrument designed or adapted to fire or discharge a knife, dagger or similar instrument by mechanical, percussive or explosive means.



1.7.2 Double-end Knives

Double-end knife, being a knife that has the appearance of 2 overlapping curved blades joined together so as to form an ellipse shape.



1.7.3 Flick Knives

Flick knife, being a knife designed or concealed when folded or recessed into the handle and which opens by gravity or centrifugal force or by any pressure applied to a button, spring or device in or attached to the handle of the knife.

adapted so that the blade is into the handle and which



1.7.4 Bowen Knife Belt, Swordstick, Riding Crop or Similar Weapon

An article that is designed to include a concealed knife or sword blade, including but not limited to:

- a) a belt or similar article designed or adapted to hold a knife, dagger, or similar instrument so that the presence of the knife, dagger or similar instrument is concealed or disguised as part of the belt or similar article when it is worn (for example an article known as the "Bowen Knife Belt");
- b) a swordstick, being a cane, stick or similar article designed or adapted to hold the blade of a sword so that it is concealed from view until withdrawn from the cane, stick or article;
- c) a riding crop designed or adapted to hold a blade or spike so that it is concealed from view until withdrawn from the crop.



1.7.5 Knuckle Knife

Knuckle knife, being an open or exposed blade or similar instrument attached to a handle that is designed or adapted to be held between the knuckles (including the device commonly known as the "Urban Pal Knife").



1.7.6 Non-metal/Ceramic Knife

Non-metal/ceramic knife, being a knife, blade, or spike of which no part is metallic, excluding plastic cutlery.



1.7.7 Push knife or Similar Device

Push knife or similar device designed as a weapon that consists of a single-edged or multi-edged blade or spike of any material that has a handle fitted transversely to the blade or spike and allows the blade or spike to be supported by the palm of the hand so that stabbing blows or slashes can be inflicted by a punching or pushing action.



1.7.8 Sheath knife (commonly known as the Black Eagle Knife)

A knife that is designed or adapted so that the blade is concealed by a plastic, wooden or metal sheath which retracts into the handle of the knife by gravity or centrifugal force or by any pressure applied to a button, spring or device in or attached to the handle of the knife (including the knife commonly known as the "Black Eagle Knife").



1.7.9 Throwing Blade

Throwing blade, being a knife or axe of any material that is designed or modified to be thrown.



1.7.10 Trench Knife

Trench knife or similar device that consists of a single-edged or multi-edged blade or spike of any material that is fitted with a handle made of any hard substance that can be fitted over the knuckles of the hand of the user to protect the knuckles and increase the effect of a punch or blow, or that is adapted for such use.



1.8 Body Armour, Extendable Batons and Disabling Devices

Body armour, extendable batons, and Oleoresin Capsicum spray are subject to Governor in Council exemptions, which cover state and federal government employees, such as Police Officers, Prisons Officers and employees, Lands and Fisheries employees, Department of Sustainability and Environment employees, and so on.

Private security licence holders have an exemption for body armour and extendable batons, but only for the purposes of their lawful employment. They do not have an exemption for oleoresin capsicum spray, or any disabling emissions device.

Definitions and images of Body Armour, Extendable Batons and Disabling Devices are as follows:

1.8.1 Acoustic Anti-personnel Device

An acoustic anti-personnel device that is designed to cause permanent or temporary incapacity or disability, or to otherwise physically disorientate a person.



1.8.2 Taser or Stun Gun

An article designed or adapted to emit an electric current into a human body for the purposes of incapacitation or injury.



1.8.3 Noxious Discharge Articles, including Capsicum Spray

An article designed or adapted to emit or discharge an offensive, noxious or irritant liquid, powder, gas or chemical so as to cause disability, incapacity or harm to another person.



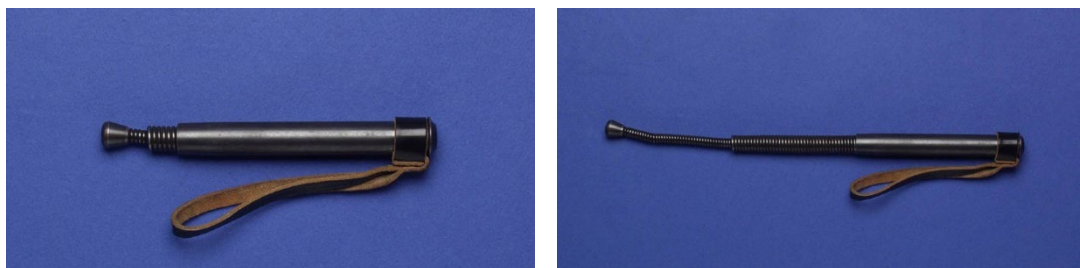
1.8.4 Body Armour

A garment or item that is designed, intended or adapted for the purpose of protecting the body from the effects of a weapon, including a firearm, other than a helmet or an item used to protect the face, eyes or ears, is prescribed to be body armour.



1.8.5 Extendable Baton

Extendable baton, being a baton designed or adapted so that the length of the baton extends by gravity or centrifugal force or by any pressure applied to a button, spring or device in or attached to the handle of the baton.



1.9 All Other Prohibited Weapons

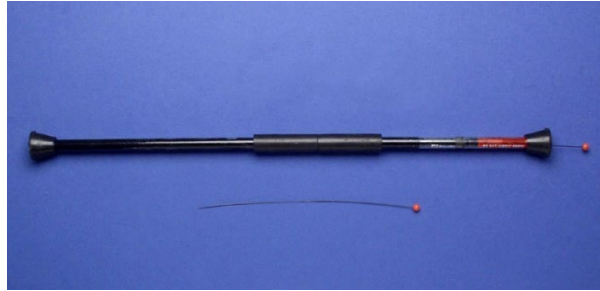
The following weapons are also prohibited and can only be possessed if the person has obtained a CCP in order to do so. There are NO GIC Exemptions in place for these types of prohibited weapons.

The definitions and images of all other prohibited weapons are as follows:

1.9.1 Blow Gun, and Blow Gun Darts

Blow gun, being a blow pipe or similar device or instrument designed to propel an arrow, dart or similar projectile by air expelled from the mouth.

A dart designed to be projected from a blow gun or similar device.



1.9.2 A Cat O'nine Tails with Knotted Lashes

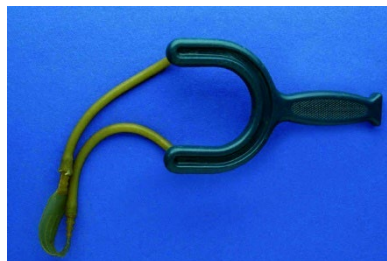


1.9.3 Hunting Sling, Catapult, Shanghai, or Slingshot

A hunting sling or slingshot designed or adapted to be used with an arm brace which fits or rests on the forearm to support the wrist from the tension of the elastic material used to propel the projectile (including the device commonly known as the "Saunders Falcon Hunting Sling").



A catapult, shanghai or hunting sling that is manufactured and intended for commercial distribution.

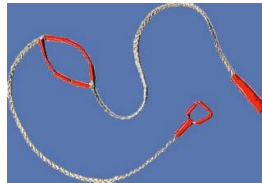


A slingshot that is manufactured and intended for commercial distribution.



1.9.4 Dart Projector

A dart projector (for example, an article commonly known as the "Darchery Dartslinger") or any similar device that is manufactured and intended for commercial distribution.



1.9.5 Flail

A flail or any other similar article that consists of a staff or handle that has fitted to one end, by any means, a freely swinging striking part that is armed with spikes or studded with any protruding matter.



1.9.6 Knuckle-duster

Knuckleduster, being a device or instrument designed or adapted to be worn across a knuckle or knuckles of the hand, finger, fingers, or thumb so as to:

- a) increase the force or impact of a punch or blow when striking another person with that hand, finger, fingers, or thumb; or
- b) protect the knuckle or knuckles from injury when striking another person with that hand, finger, fingers, or thumb.



1.9.7 Laser Pointers

A hand-held battery-operated article commonly known as a "laser pointer" designed or adapted to emit a laser beam with an accessible emission limit of greater than 1 mW.



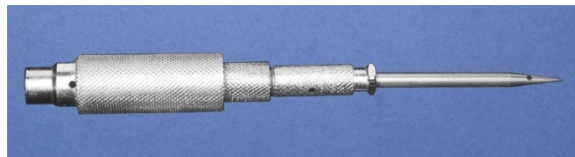
1.9.8 Mace

A mace or any other similar article capable of causing injury that consists of a club or staff fitted with a flanged or spiked head, other than a ceremonial mace made for and used solely as a symbol of authority on ceremonial occasions.



1.9.9 Shark Dart

Shark Dart or any other similar device that is designed to expel, on or after contact, any gas or other substance capable of causing bodily harm.



1.9.10 Studded Glove

Studded glove, being a glove or any other similar article designed or constructed to be used as a weapon (including a fingerless glove), that has a number of raised studs or spikes made of a hard substance and positioned over the back of the glove to increase the effect of a punch or blow.



1.9.11 Weighted Glove

Weighted glove, being a glove or any other similar article designed or constructed to be used as a weapon (including a fingerless glove) that has weighted material sewn into it to increase the effect of a punch or blow.



1.9.12 A Whip with Metal Lashes

